

HW2

Height: 24" Width: 7.1" Depth: 15.1"
(60.96cm x 18.03 cm x 38.4 cm)



2 Gallon Hot Water Dispenser

- Two gallons (7.57L) of hot water in a space-saving machine just 7.1" (18.03cm) wide to fit any counter
- Fresh, hot water is always available since the HW2 is hooked to your water line
- High quality, easy-to-clean stainless steel exterior and tank for a long, dependable life
- Includes drip tray
- Two year parts and labor warranty

Agency:



Specifications

Product #: 02500.0016

Water Access: Plumbed

Finish: Stainless/Grey

Additional Features

Electrical & Capacity

Volts*	Amps	Tank Heater Watts	Total Watts	Cord Attached	Plug Type	Dispensing Capacity	Cubic Ft.	# Wires plus Ground	Hertz
120	15	1700	1800	Yes	NEMA 5-15P	4.2 gal./hr.	2.1	2	60

Plumbing Requirements

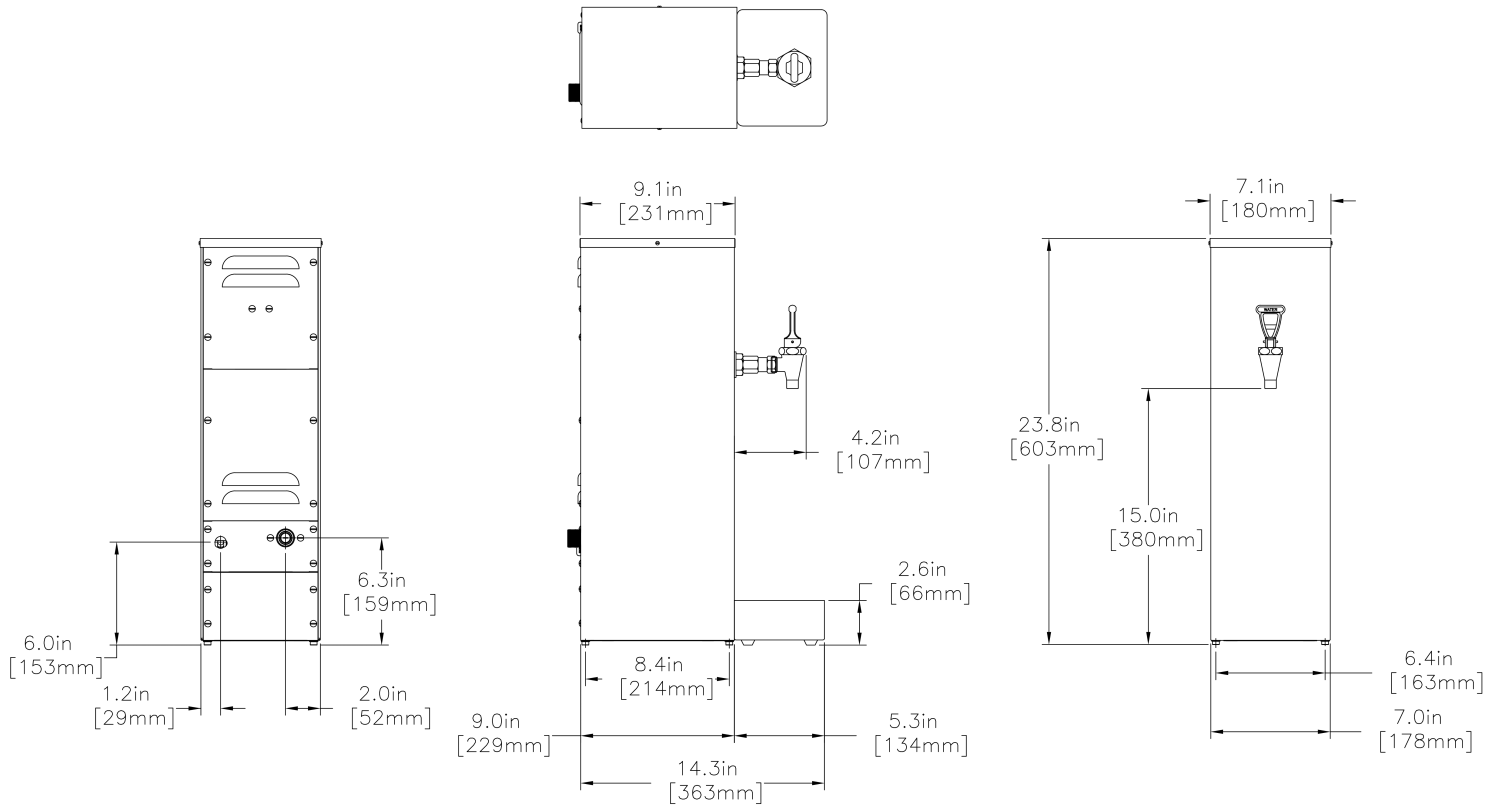
PSI	kPa	Fitting Supplied	Water Flow Required (GPM)
20-90	138-621	1/4" Male Flare Fitting	GPM

CAD Drawings

2D	Revit	KLC
●		



BUNN® reserves the right to change specifications and product design without notice. Such revisions do not entitle the buyer to corresponding changes, improvements, additions or replacements for previously purchased equipment. For most current specifications and other info visit bunn.com.



Unit				Shipping				
	Height	Width	Depth	Height	Width	Depth	Weight	Volume
English	28.4 in.	7 in.	17.4 in.	32.3 in.	10.9 in.	20.4 in.	30.150 lbs	3.349 ft ³
Metric	72.1 cm	17.8 cm	44.2 cm	81.9 cm	27.6 cm	51.8 cm	9.140 kgs	0.095 m ³



BUNN® reserves the right to change specifications and product design without notice. Such revisions do not entitle the buyer to corresponding changes, improvements, additions or replacements for previously purchased equipment. For most current specifications and other info visit bunn.com.

Related Products & Accessories:HW2



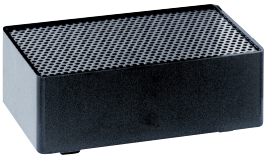
WEQ-10(1.5)5L SYSTEM

Product #: 56000.0024



REPLACEMENT
CARTRIDGE

Product #: 56000.0121



DRIP TRAY KIT

Product #: 02497.0001



BUNN® reserves the right to change specifications and product design without notice. Such revisions do not entitle the buyer to corresponding changes, improvements, additions or replacements for previously purchased equipment. For most current specifications and other info visit bunn.com.